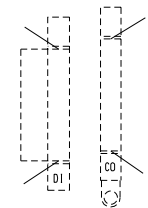
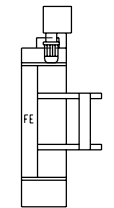
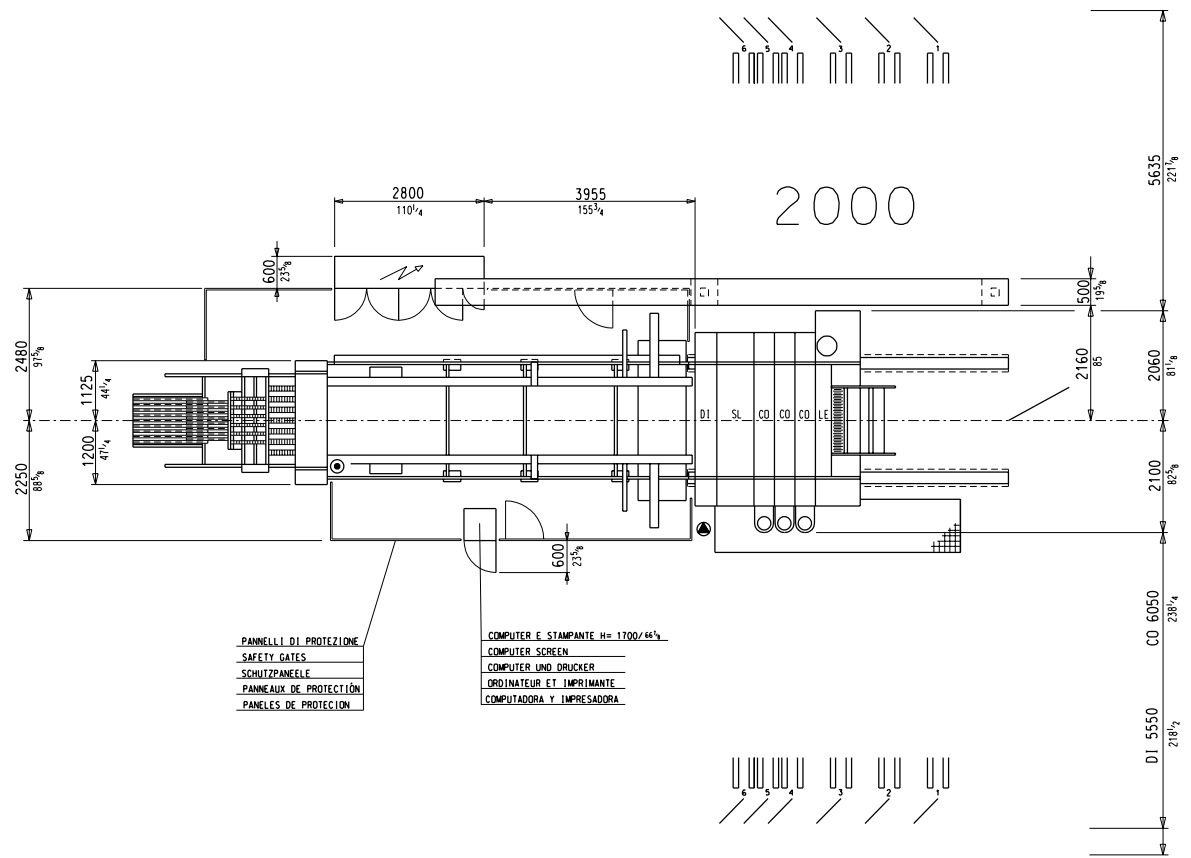
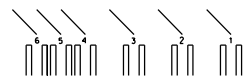
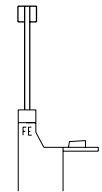
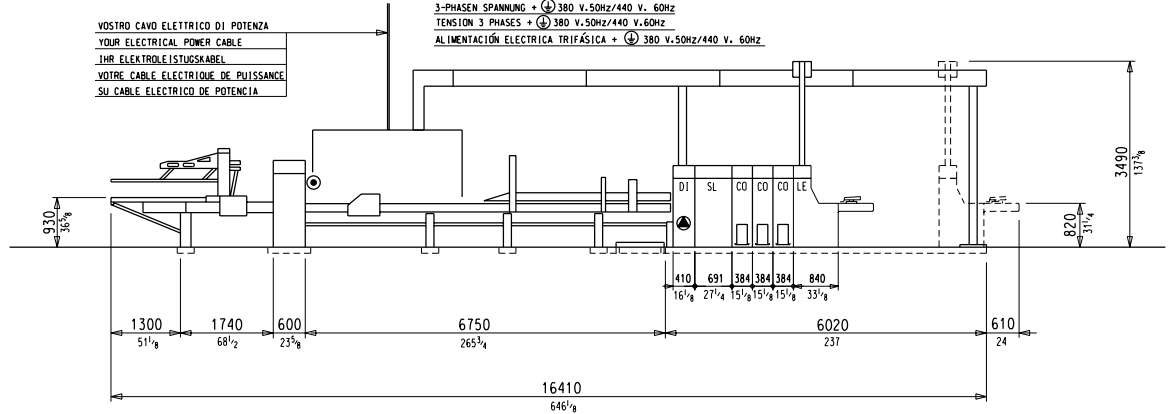


TENSIONE 3 FASI + 380 V. 50Hz/440 V. 60Hz  
 3-PHASE VOLTAGE + 380 V. 50Hz/440 V. 60Hz  
 3-PHASE SPANNUNG + 380 V. 50Hz/440 V. 60Hz  
 TENSION 3 PHASES + 380 V. 50Hz/440 V. 60Hz  
 ALIMENTACIÓN ELECTRICA TRIFÁSICA + 380 V. 50Hz/440 V. 60Hz

VOSTRO CAVO ELETTRICO DI POTENZA  
 YOUR ELECTRICAL POWER CABLE  
 IHR ELEKTROLEISTUNGSKABEL  
 VOTRE CABLE ELECTRIQUE DE PUISSANCE  
 SU CABLE ELECTRICO DE POTENCIA

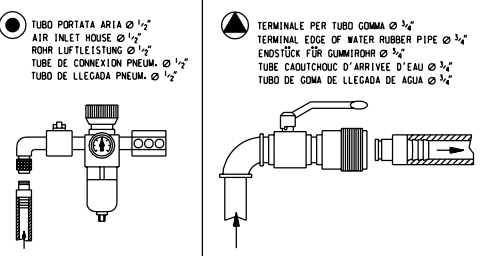


PANNELLI DI PROTEZIONE  
 SAFETY GATES  
 SCHUTZPANEELE  
 PANNEAUX DE PROTECTION  
 PANELES DE PROTECCION

COMPUTER E STAMPANTE H= 1700/66 1/2  
 COMPUTER SCREEN  
 COMPUTER UND DRUCKER  
 ORDINATEUR ET IMPRIMANTE  
 COMPUTADORA Y IMPRESADORA

MISURE ESPRESSE IN mm.  
 MEASURES IN mm.  
 MAßE IN mm. ANGEZEIGEN  
 DIMENSIONS EN mm. ET INCHES  
 MEDIDAS PUESTAS EN mm. Y PULGADAS

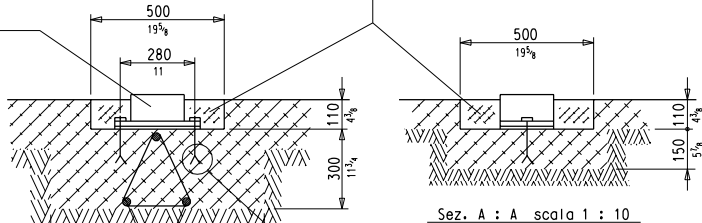
MISURE ESPRESSE IN mm. E POLLICI  
 MEASURES IN mm. AND INCHES  
 MAßE IN mm. ANGEZEIGEN UND INCHES  
 DIMENSIONS EN mm. ET INCHES  
 MEDIDAS PUESTAS EN mm. Y PULGADAS



Sostituito da /	In data /	Firma /	Toll. /	Lavorazione /
Sostituisce il /	In data /	Firma /	Disegnato da /	Verificato da /
REV. N° 00	In data /	Firma /	Approvato da /	
QUESTO DISEGNO È DI PROPRIETÀ ESCLUSIVA DELLA		Tip. Macchine: CM 800/00 NT	Mat. 1°/Modello: /	Trattamenti: /
Macchine per il cartone ondulato Computer board converting machines		Oggetti: / Scala: 1:50	Materiale: / Dis. Num. MI	
LAY OUT				

POSIZIONAMENTO BINARI E FISSAGGIO TASSELLI A CURA DELL'INSTALLATORE.  
RAILS AND EXPANSION DOWELS WILL BE POSITIONED AND FIXED BY OUR ERECTOR.  
SCHIENENANORDNUNG UND DUBELBEFESTIGUNG OBLIEGEN DEM INSTALLATEUR.  
LE POSITIONNEMENT DES RAILS ET LA FIXATION DES GOIJONS SERONT EFFECTUES PAR L'INSTALLATEUR.  
POSICIONAMIENTO RIELES Y FIJACION TOPES A CUIDADO DEL INSTALADOR.

AREA DA RIEMPIRE CON CEMENTO.  
AREA TO FILL UP WITH CEMENT.  
BETREFFENDES FELD MIT ZEMENT FÜLLEN.  
ZONE DEVANT ÊTRE REMPLIE AVEC DU CIMENT.  
AREA PARA RELLENAR CON CEMENTO.



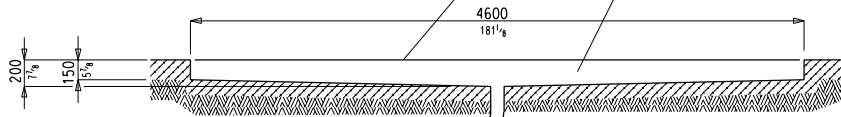
Sez. A : A scala 1 : 10

NESSUNA GABBIA METALLICA IN QUESTE AREE PER POSIZIONAMENTO TASSELLI BINARI. INSERIRE GABBIA METALLICA AL CENTRO DELLO SCAVO.  
NO METAL CAGE IN THESE AREAS DUE TO POSITIONING OF EXPANSION DOWELS. METAL CAGE MUST BE POSITIONED AT PIT CENTER.  
KEIN METALLGERÜST IN DIESEN FELDERN ZURN SCHIENENÜBELANORDNUNG.  
DAS METALLGERÜST IN DIE VERTIEFUNG EINFÜHREN.  
AUCUNE CAGE METALLIQUE DANS CES ZONES POUR LE POSITIONNEMENT DES GOIJONS DES RAILS.  
INTRODUIRE LA CAGE METALLIQUE AU CENTRE DE LA TRANCHEE DE FONDATION.  
NINGUNA JAULA METALICA EN ESTAS AREAS PARA POSICIONAMIENTO TOPES RIELES. PONER JAULA METALICA EN EL CENTRO DE LA EXCAVACION.

Sez. B : B scala 1 : 10

VOSTRO GRIGLIATO COPERTURA FOSSA RECUPERO LIQUIDI  
YOUR COVER GRILL ON THE LIQUIDS RECOVERY HOLE  
IHR GITTER DAMIT DIE FLÜSSIGKEITSAUFANGGRUBE ABGEDECKT IST  
VOTRE GRILLE DE COUVERTURE DE LA FOSSE DE RECUPERATION DES LIQUIDES  
VUESTRA REJILLA PARA CUBRIR FOSA RECUPERACION LIQUIDOS.

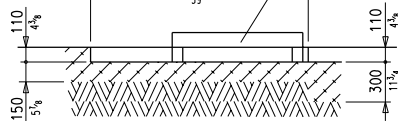
FOSSA ACQUE SCARICO  
WASTE WATER DRAIN  
WASSERABLAGGRUBE  
FOSSE DES EAUX DE DEVERSEMENT  
FOSSA AGUA DESCARGA.



Sez. C : C scala 1 : 20

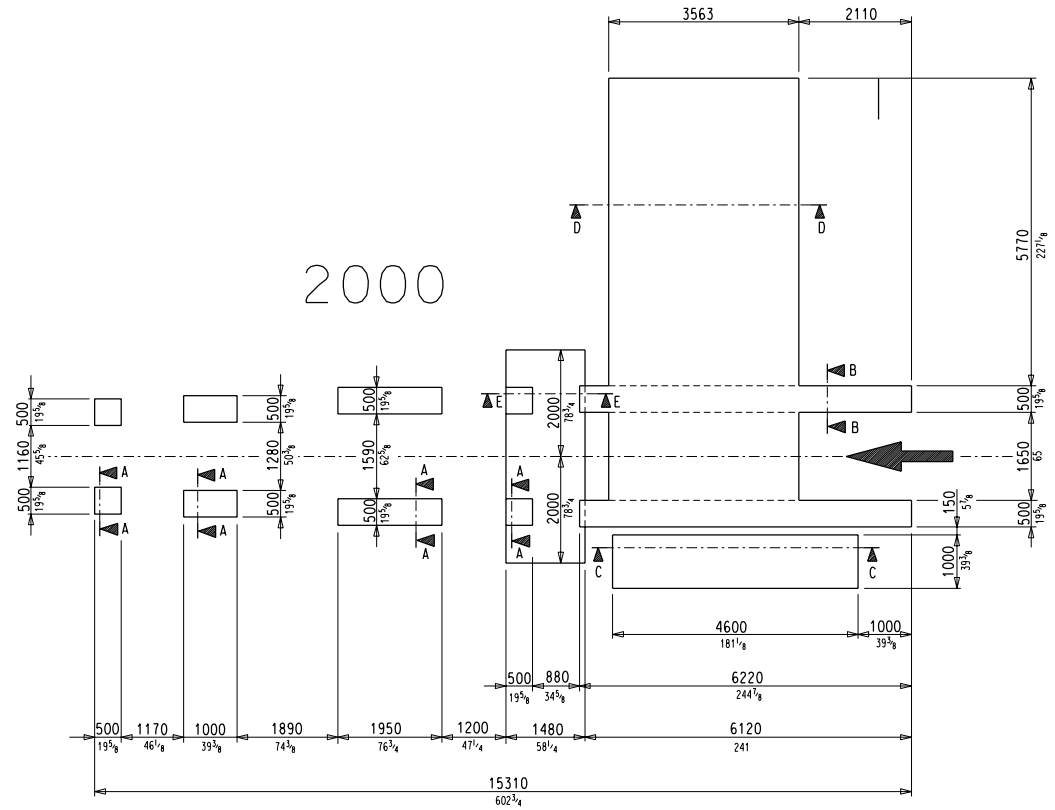
CANALE COMUNE RACCOLTA LIQUIDI  
WASTE WATER MAIN DRAIN  
ALLGEMEINER FLÜSSIGKEITSSAMMELKANAL  
CANAL COMMUN DE RECUPERATION DES LIQUIDES  
CANAL COMUN RECOLECCION LIQUIDOS.

TAPPETO ESPULSIONE RIFILLI  
SCRAP CONVEYOR  
UNTERLAGE FÜR SCHNITTRESTAUSWURF  
TAPIS D'EVACUATION DES DECHETS  
ALFOMBRAS PARA EXPULSION RECORTES.



Sez. E : E scala 1 : 20

2000



MISURE ESPRESSE IN mm.  
MEASURES IN mm.  
MAßE IN mm. ANGEZEIGT  
DIMENSIONS EN mm. ET INCHES  
MEDIDAS PUESTAS EN mm. Y PULGADAS



TERRENO GROUND BODEN TERRAIN TERREIN	Sostituito dal / In data / Firma /	Toll. Gen. / Lavorazione /
CEMENTO CEMENT ZEMENT CIMENT CEMENTO	Sostituito il / In data / Firma /	Disegnato dal / Verificato dal / Approvato dal /
	REV. N° 00 Questo disegno è di proprietà esclusiva della Macchine per il cartone ondulato Compagny board conveyer machines	Mat. N°/Modello / Trattamento / Peso Kg /
	Objetto: FOUNDATION PLAN PIANI DI FONDAZIONE	Materiale: /
	Macchine per il cartone ondulato Compagny board conveyer machines	Scala 1:50 / Dis. Num. PF